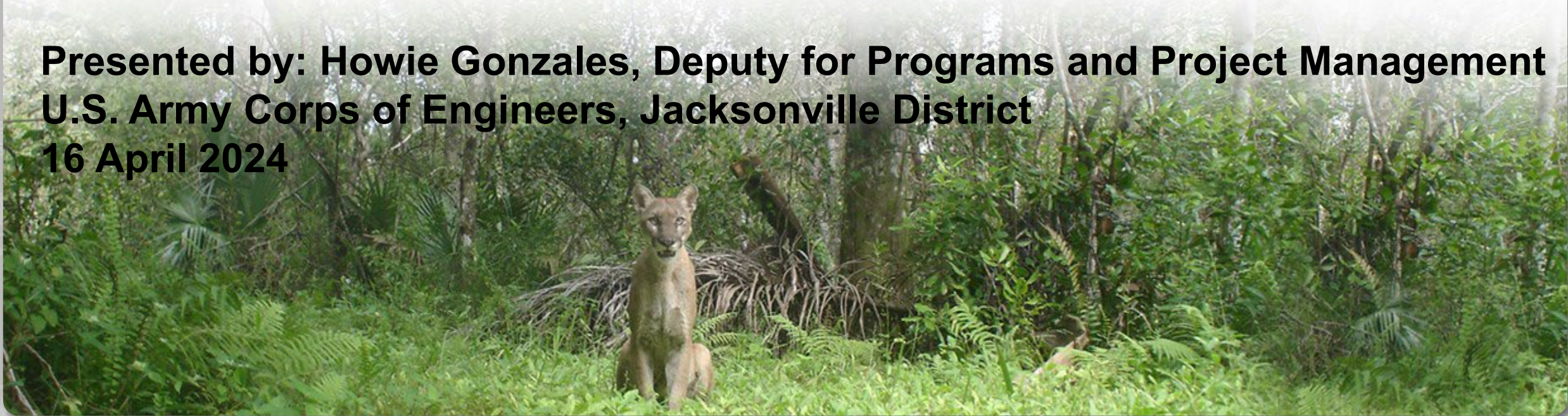


**U.S. ARMY CORPS OF ENGINEERS (USACE)  
JACKSONVILLE DISTRICT (SAJ)**

# **COMPREHENSIVE EVERGLADES RESTORATION PLAN (CERP)**

**Presented by: Howie Gonzales, Deputy for Programs and Project Management  
U.S. Army Corps of Engineers, Jacksonville District  
16 April 2024**



**U.S. ARMY**



**US Army Corps  
of Engineers®**





U.S. ARMY

## A Laboratory for Learning: Large-Scale Ecosystem Restoration and the Legacy of Secretary Bruce Babbitt

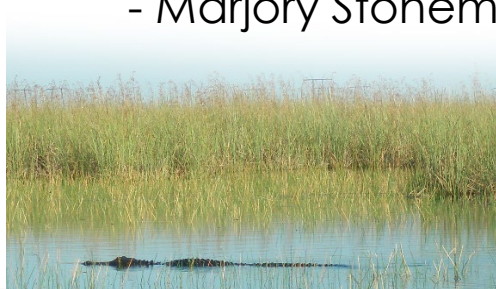


### AGENDA

- **The Comprehensive Everglades Restoration Plan (CERP)**
- **Accomplishments**
- **Going Forward**
- **Decision Making Structure**
- **Science Structure**

**“THERE ARE NO OTHER EVERGLADES IN THE WORLD”**

- Marjory Stoneman Douglas -





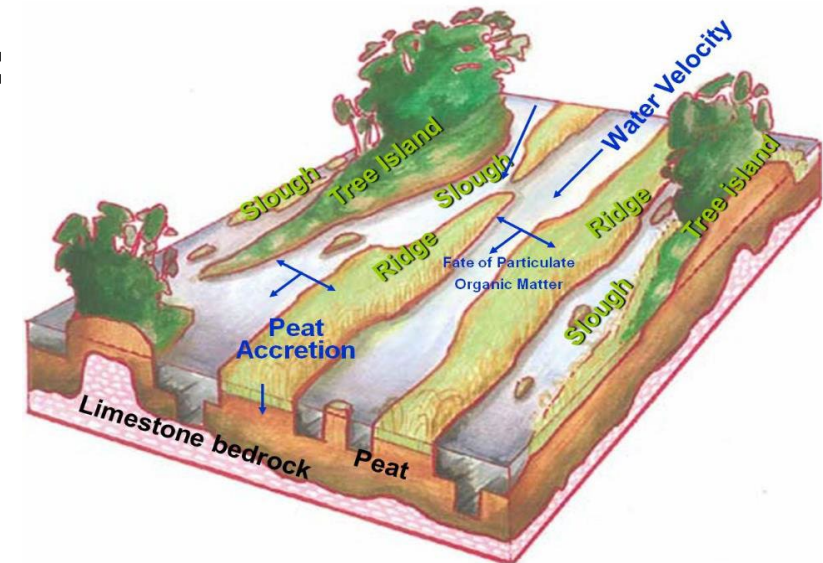
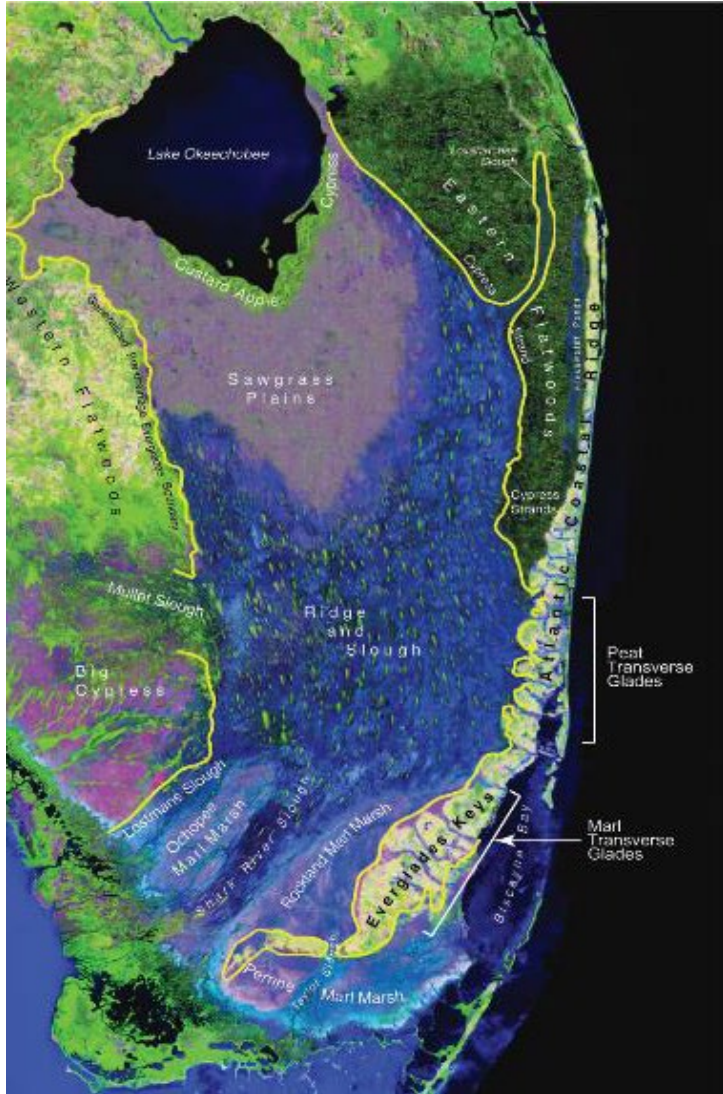
U.S. ARMY

# THE HISTORIC EVERGLADES ECOSYSTEM



## “River of Grass”

- Natural system composed of over 9 million acres of lakes, rivers and wetlands
- Water flowed from central Florida through Lake Okeechobee and south into Florida Bay
- Unique and diverse mosaic of habitat
- Over 60 inches of rain annually
- Very flat - slopes one inch per mile





U.S. ARMY



Pre-development  
"River of Grass"



Extensive Agricultural  
Development of  
Muck Lands

Late 1800s/Early 1900s

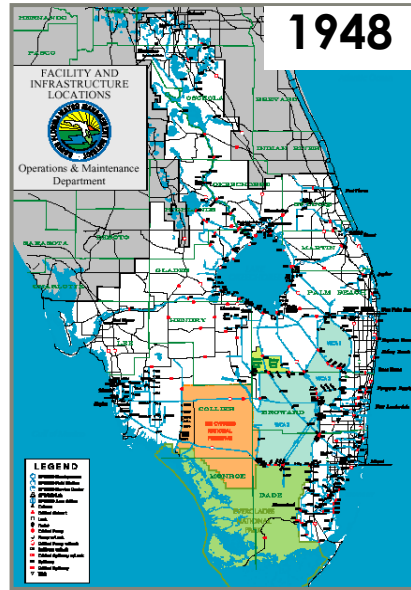


Settlement Continues



Catastrophic Hurricanes  
and Floods

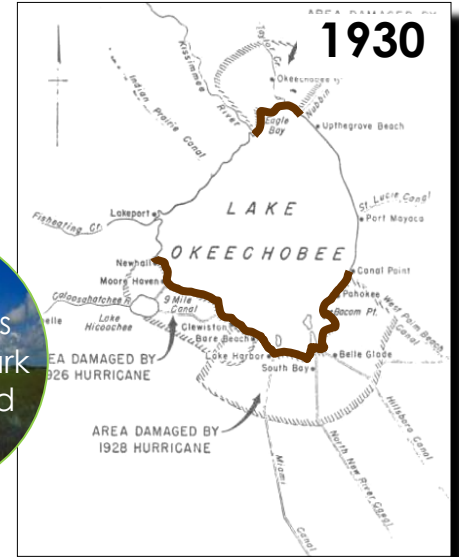
WRDA 2000  
CERP  
Authorized



Central & Southern Florida  
(C&SF) Project Authorized



The 1947 Flood



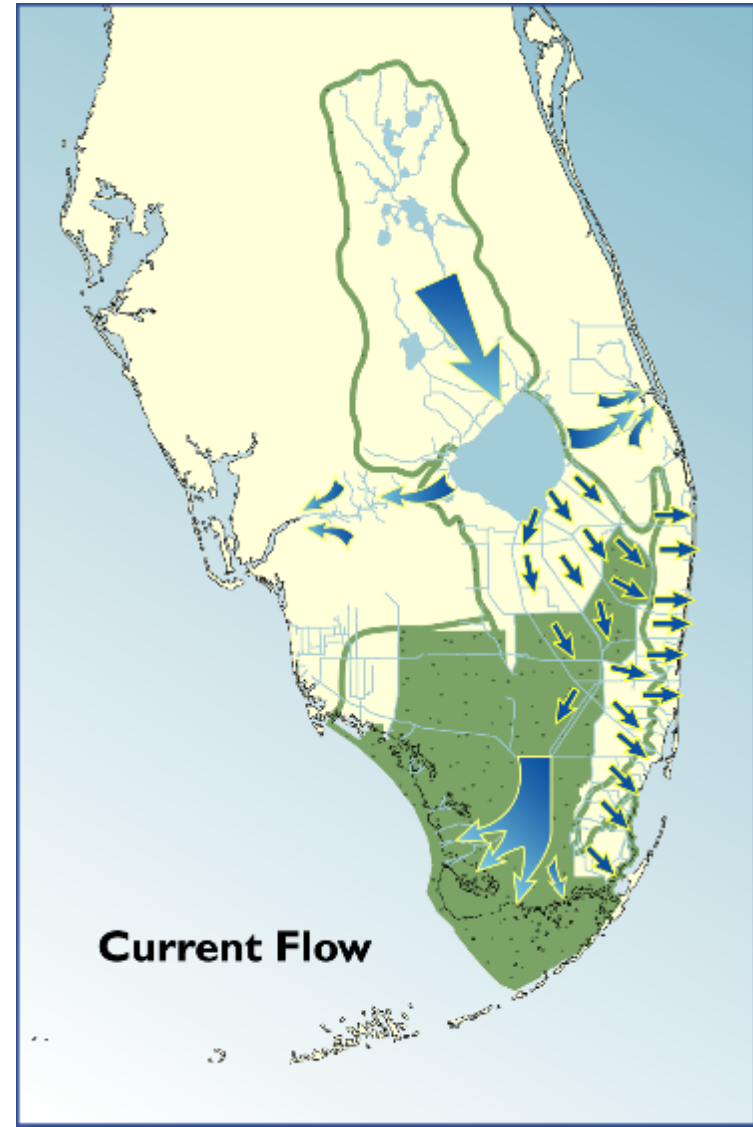
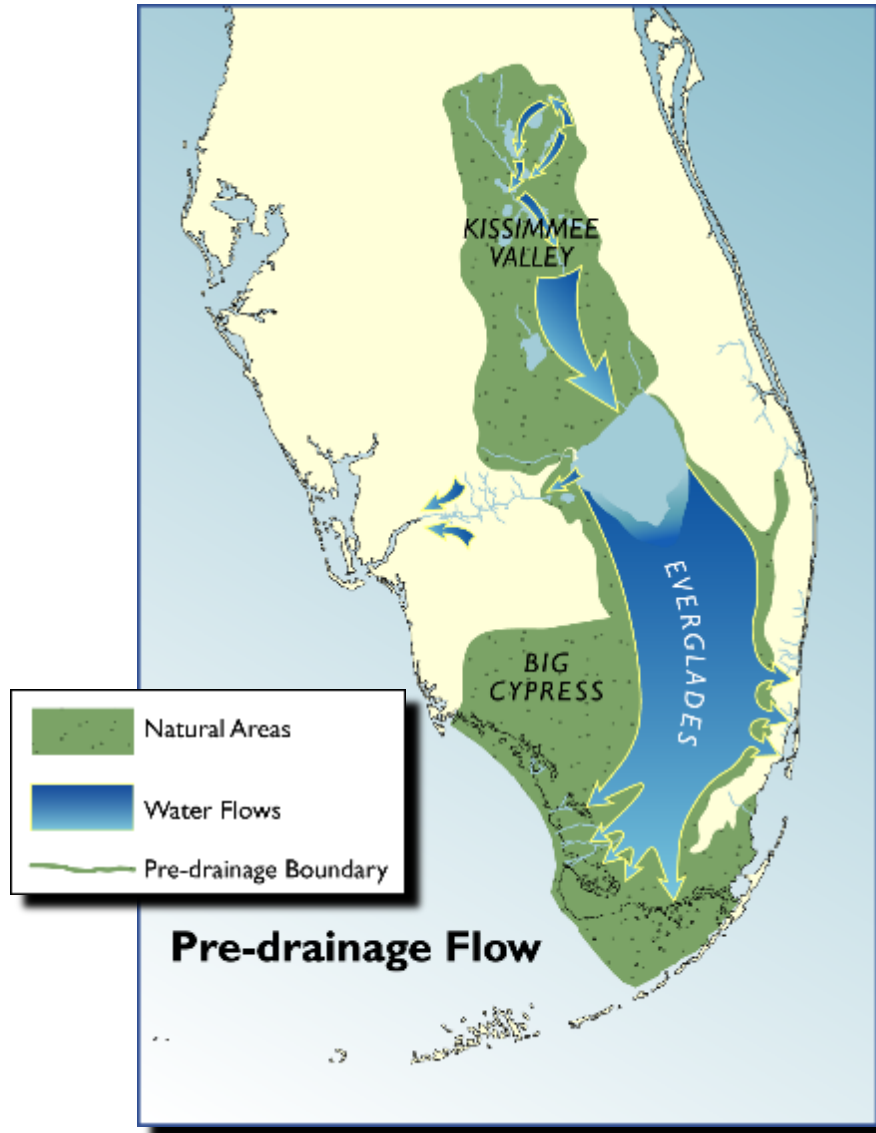
Congress authorizes the  
Herbert Hoover Dike





U.S. ARMY

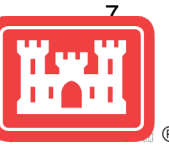
# Historical Flows Significantly Altered





U.S. ARMY

# An Ecosystem in Trouble



- Disruption in quantity, timing, and distribution of water
- Degradation of water quality
- Oxidization and subsidence of peat soils
- Loss of ridge and slough
- Exotic and invasive plants and animals have altered the ecosystem
- Declining estuary health
- Reduction in spatial extent of the natural system
- Massive reductions in wading bird populations
- Federally-listed threatened and endangered species
- Repetitive water shortages and salt water intrusion



U.S. ARMY

# C&SF Project Review Study (The Restudy)



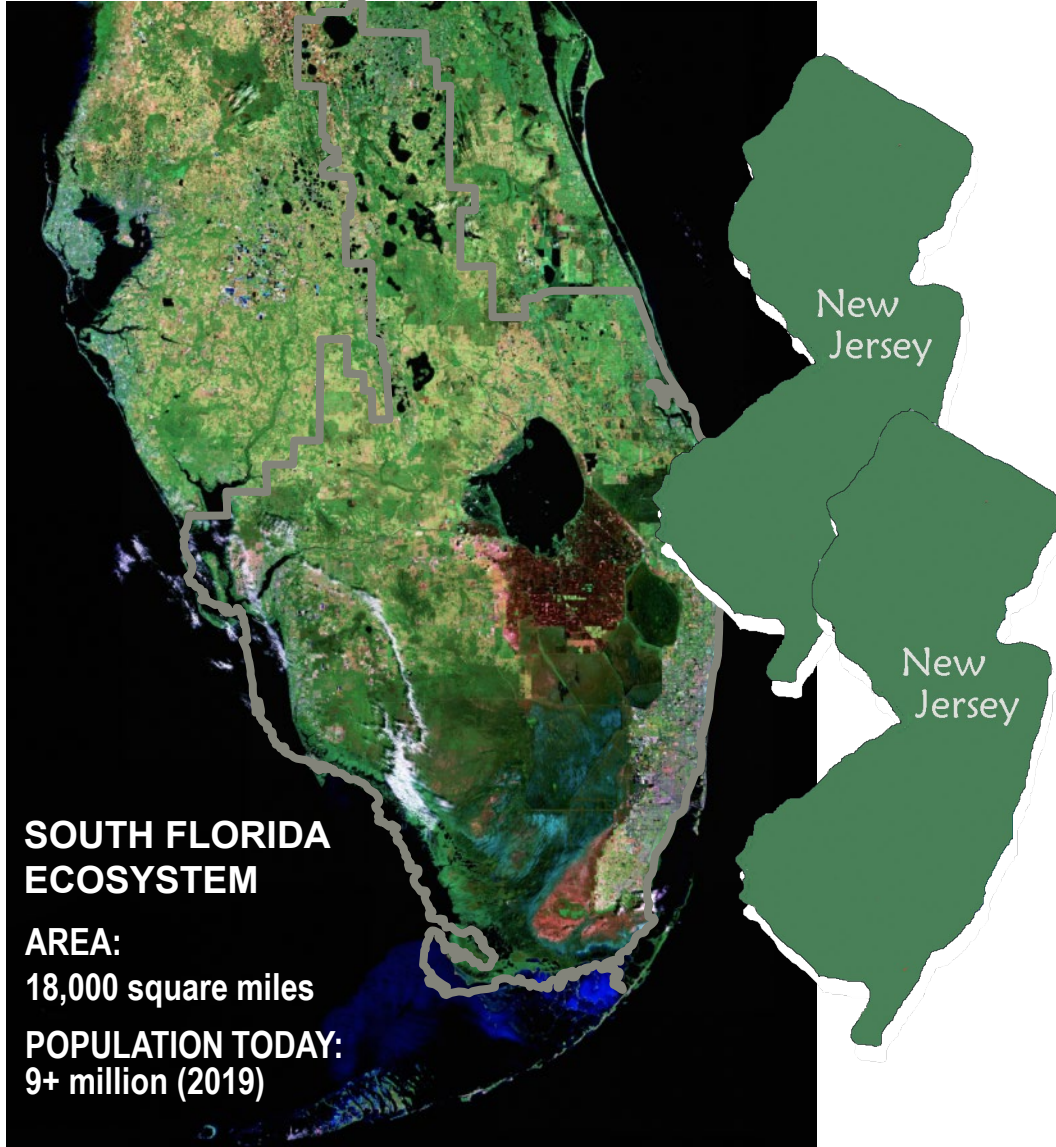
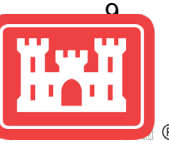
- **Need for comprehensive solution recognized**
- **Study authorized by Congress in WRDA-92 and initiated in June 1993 (Recon Report)**
- **Purpose - modify C&SF Project to:**
  - Restore South Florida ecosystem
  - Enhance water supplies
  - Maintain flood protection
- **Additional authorization/requirements in WRDA-96**
  - Task Force
  - Comprehensive Plan with consideration of Governor's Commission Conceptual Plan





U.S. ARMY

# Everglades Restoration



**SOUTH FLORIDA  
ECOSYSTEM**

**AREA:**  
18,000 square miles

**POPULATION TODAY:**  
9+ million (2019)

- Planning in an area twice the size of New Jersey
- Intense stakeholder interest
- Competing interests
- Complexity of problems
- Conflicting agency responsibilities



**Getting The  
Water Right!**



# Comprehensive Everglades Restoration Plan (CERP)

*Rescuing an Endangered Ecosystem:  
The Plan to Restore America's  
Everglades*



*The Central and Southern Florida Project  
Comprehensive Review Study  
(The Restudy) July 1999*

**On December 11, 2000, the President signed the Water Resources Development Act of 2000 approving:**

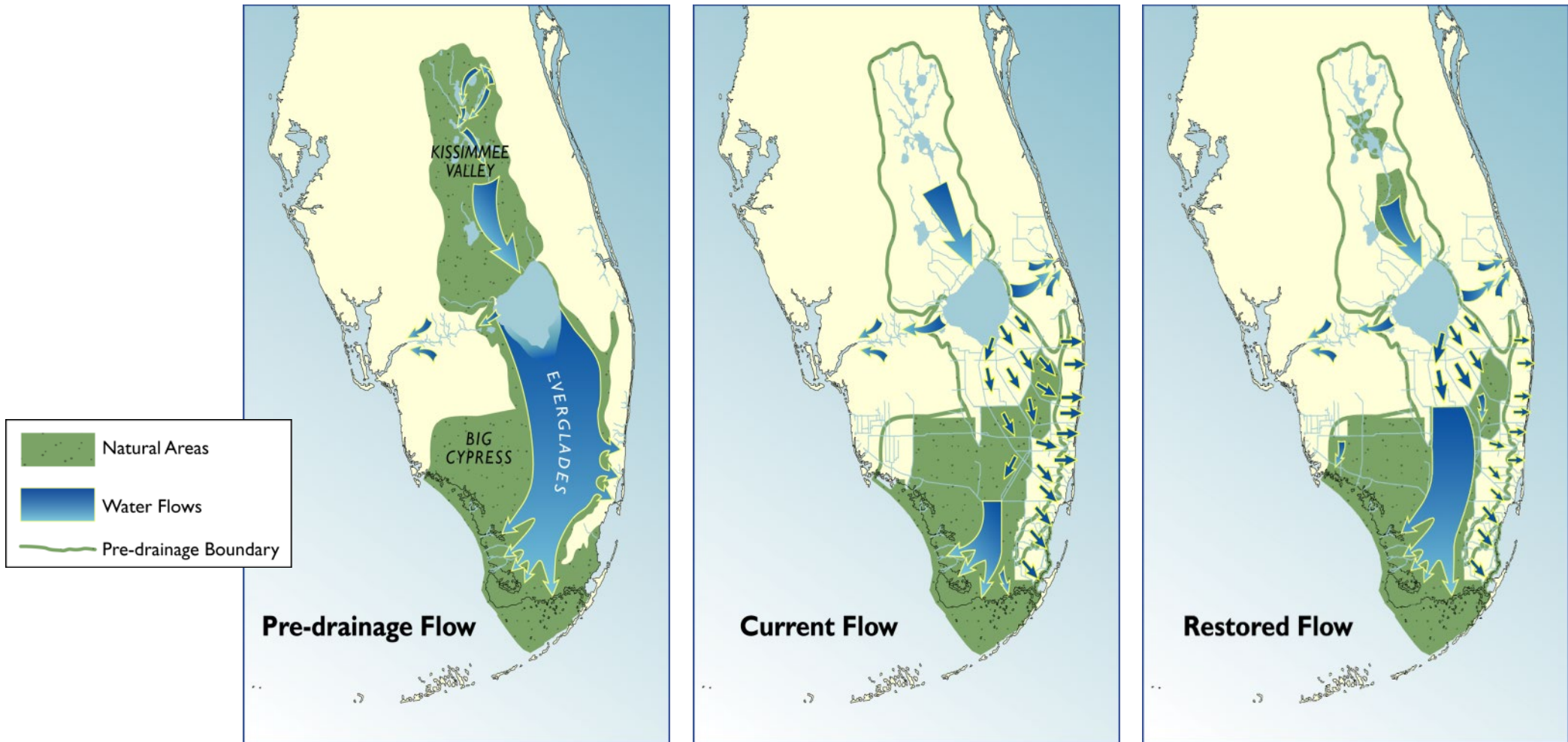
## Comprehensive Everglades Restoration Plan (CERP)



**A program providing for the restoration, preservation, and protection of the south Florida ecosystem while providing for other water-related needs of the region.**

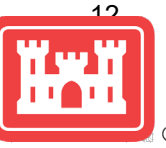


# Comprehensive Everglades Restoration Plan (CERP)





U.S. ARMY



# Accomplishments

## Planning:

- Creation of governance structure, including the South Florida Ecosystem Restoration Task Force
- Established Science program through RECOVER; and system-wide monitoring program through the Adaptive Assessment & Monitoring
- Authorization of 15+ project study reports in WRDAs
- Multiple ongoing studies for remaining CERP components
- Created IDS to guide SFER/CERP implementation

## Design & Construction:

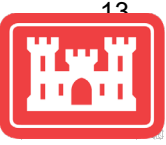
- Executed CERP Master Agreement and CERP Design Agreements
- Executed 10+ Project Partnership Agreements for project construction
- Ongoing construction of 10+ SFER/CERP projects
- Construction completion of multiple SFER/CERP components
- Work closely with South Florida Water Management District to construct projects together

## Operations & Maintenance (O&M):

- Multiple project components completed and transferred to O&M
- Cost shared 50% Federal / 50% non-Federal
- SFWMD operates and maintains
- System Operating Manuals and Project Operating Manuals guide project operations
- Adaptive Management takes place during operations and adjustments are made, as required



U.S. ARMY

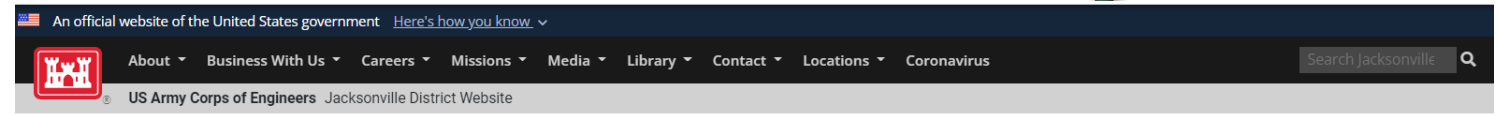


# Going Forward Integrated Delivery Schedule (IDS)

- A “road map” that guides projects and maximizes the benefits of all CERP efforts
- Communication tool
- Updated annually through an extensive public process with participation of the South Florida Ecosystem Restoration Task Force and its Working Group
- Projects and planning timelines organized so that the beginning of one element coincides with progress or completion of others

Or Google  
“CERP IDS”

[www.saj.usace.army.mil/IDS/](http://www.saj.usace.army.mil/IDS/)



Home / Missions / Environmental / Ecosystem Restoration / Integrated Delivery Schedule

## Welcome to the Integrated Delivery Schedule (IDS)



The 2022 Integrated Delivery Schedule (IDS) is available! The IDS provides the roadmap for sequencing of planning, design, construction and operations of both federal and state projects related to Everglades restoration.

## Integrated Delivery Schedule



The Integrated Delivery Schedule (IDS) is a forward-looking snapshot of upcoming design and construction schedules and programmatic costs at a “top” line level for the South Florida Ecosystem Restoration (SFER) Program. It includes Modified Water Deliveries to Everglades National Park, Critical Projects, Kissimmee River Restoration, non-Comprehensive Everglades Restoration Plan (CERP) Central and Southern Flood (C&SF), and CERP projects. The Comprehensive Everglades Restoration Plan (CERP) focuses on the “getting the water right.” CERP—the largest aquatic ecosystem restoration effort in the nation, spanning over 18,000 square miles—is designed to improve the health of more than 2.4 million acres.

The IDS reflects the sequencing strategy for planning, design, and construction and does not include costs for completed work or land acquisition. The IDS does not require an agency action and is not a decision document. It is a tool that provides information to decision-makers—a living document that is updated as needed to reflect progress and/or program changes. The IDS synchronizes program and project priorities with the State of Florida and achieves the CERP restoration objectives at the earliest practicable time, consistent with annual funding updates and the interdependencies between project components. All Everglades restoration-related projects upon which the CERP is dependent—such as the Herbert Hoover Dike, the Modified Water Deliveries to Everglades National Park, Tamiami Trail Next Steps bridging, and the Restoration Strategies projects—are reflected in the IDS schedule, but are not included in the funding scenario. These projects are funded through other program authorities or by other entities. Restoration projects by others are also not included but are considered during planning.

The South Florida Ecosystem Restoration Task Force Working Group sponsored a series of public

Request a viewable and printable (11 x 17) PDF version of the Integrated Delivery Schedule (IDS)



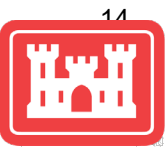
Request a viewable and a printable (11 x 17) PDF of the final 2022 IDS

View the Final 2022 IDS  
The Integrated Delivery Schedule (IDS) provides the roadmap for sequencing,



U.S. ARMY

# Decision Making



- **U.S. Army Corps of Engineers**
- **South Florida Water Management District**
- **Federal & State Agencies**
- **Miccosukee and Seminole Tribes**
- **Local Governments**
- **Stakeholders**
  
- **USACE MEGA Program**
- **SFER Task Force**
  - Working Group / Science Coordinatin Group
- **Everglades Caucus**
- **Everglades Coalition**

**Data Sharing**



**Active Public Involvement**



**Interagency Teams**



**Task Force, Working Group, Science Coordination Group**



**Public Workshops**



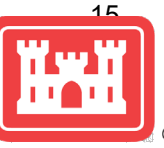
**Project Delivery Teams (PDTs)**





U.S. ARMY

## Science



# RECOVER: REstoration, COordination & VERification



- Ensures CERP implementation is guided by the best available science
- Three Major Missions:
  - **Assessment:** measuring performance of projects through research and monitoring
  - **Evaluation:** forecasting project performance through predictive modeling and performance measures
  - **Planning:** integrating RECOVER with planning and operation of the system



U.S. ARMY



**“There are no other Everglades in the world.”**

**Marjory Stoneman Douglas**







U.S. ARMY



# WE ARE HIRING!

## Join the Jacksonville District Team



**Seeking to fill multiple positions:**

Biologist, Physical Scientist, Program Analyst, Engineers, Geologist, Chemist, Landscape Architect and many more.

Scan the QR Code



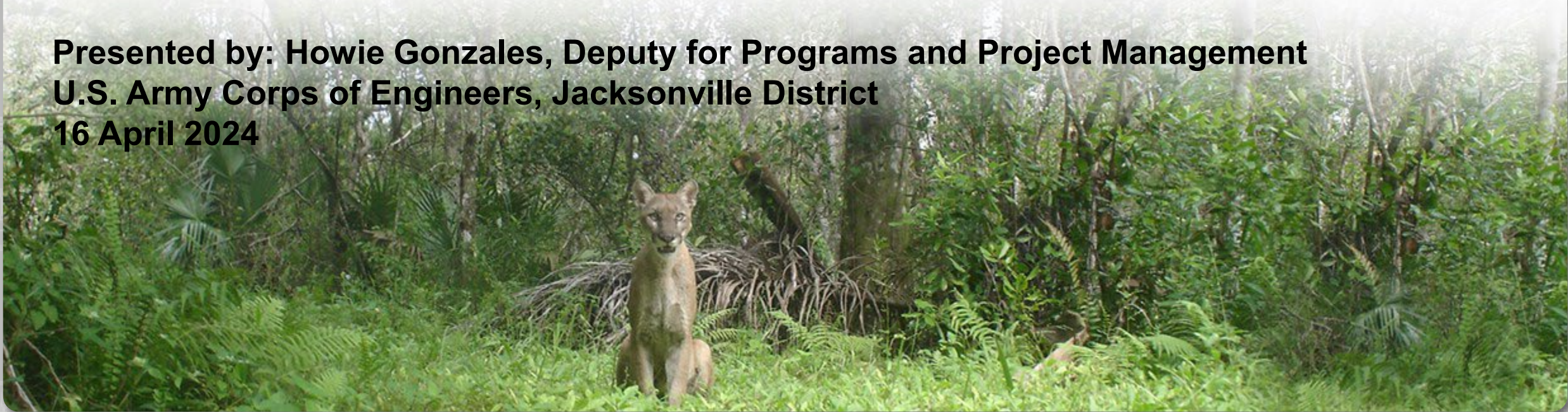
Or visit

[www.saj.usace.army.mil/NowHiring](http://www.saj.usace.army.mil/NowHiring)

**U.S. ARMY CORPS OF ENGINEERS (USACE)  
JACKSONVILLE DISTRICT (SAJ)**

# **COMPREHENSIVE EVERGLADES RESTORATION PLAN (CERP)**

**Presented by: Howie Gonzales, Deputy for Programs and Project Management  
U.S. Army Corps of Engineers, Jacksonville District  
16 April 2024**



*construed as an official Department of the Army position, policy or decision, unless so designated by other official documentation.*



**U.S. ARMY**

**US Army Corps  
of Engineers®**

